

## CHALLENGE

I challenge myself to  
always do my best

## GROWTH.

I can always  
improve and help  
others to improve

I did it!

**HAUTAPU**  
SCHOOL

# Strategic Plan 2024-2025

HAUTAPU  
SCHOOL

**EXPLORE  
YOUR  
LIMITS**





Hautapu School is a picturesque rural school just beyond Cambridge in the heart of the Waikato. As a proud Full Primary school, we dedicate ourselves to preparing students from Years 1-8 for successful transitions into high school and beyond.

While our unwavering commitment to providing quality education remains central to our vision, we equally prioritise fostering a caring and nurturing environment where our students can establish strong relationships and thrive. Recognising that relationships form the core of learning, we actively promote effective and meaningful connections between students and teachers, peers, parents, and the broader community. Visitors often remark on the warm and welcoming atmosphere that envelopes our school from the moment they step through the doors.

Hautapu School has earned a positive reputation within the community, reflecting our dedication to open and effective communication with parents, whānau, and the wider community. Our students benefit from a diverse range of academic, sporting, cultural, and service opportunities facilitated by teachers committed to upholding high standards of best practice in teaching and learning. We are steadfast in our commitment to providing continuous professional learning for our staff, ensuring that our curriculum and learning environments, both physical and online, support innovative and effective learning experiences.

# Hautapu School Vision and Values



At Hautapu School we model our teaching and learning experiences on The Learning Pit (James Nottingham). New learning requires learners to **Challenge** themselves to do and be the best they can be. It requires them to have **Courage** to seek new knowledge and experiences, we describe this as jumping into the Learning Pit. Once they're in the Learning Pit, learners are encouraged to **Explore** new learning by asking questions and being curious. Learners use their **Community** to help them seek new knowledge and skills as well as build confidence with this new learning. Once learners **Explore** and use their **Community**, they show **Growth** and exit the Learning Pit with increased knowledge, skills and shared experiences.

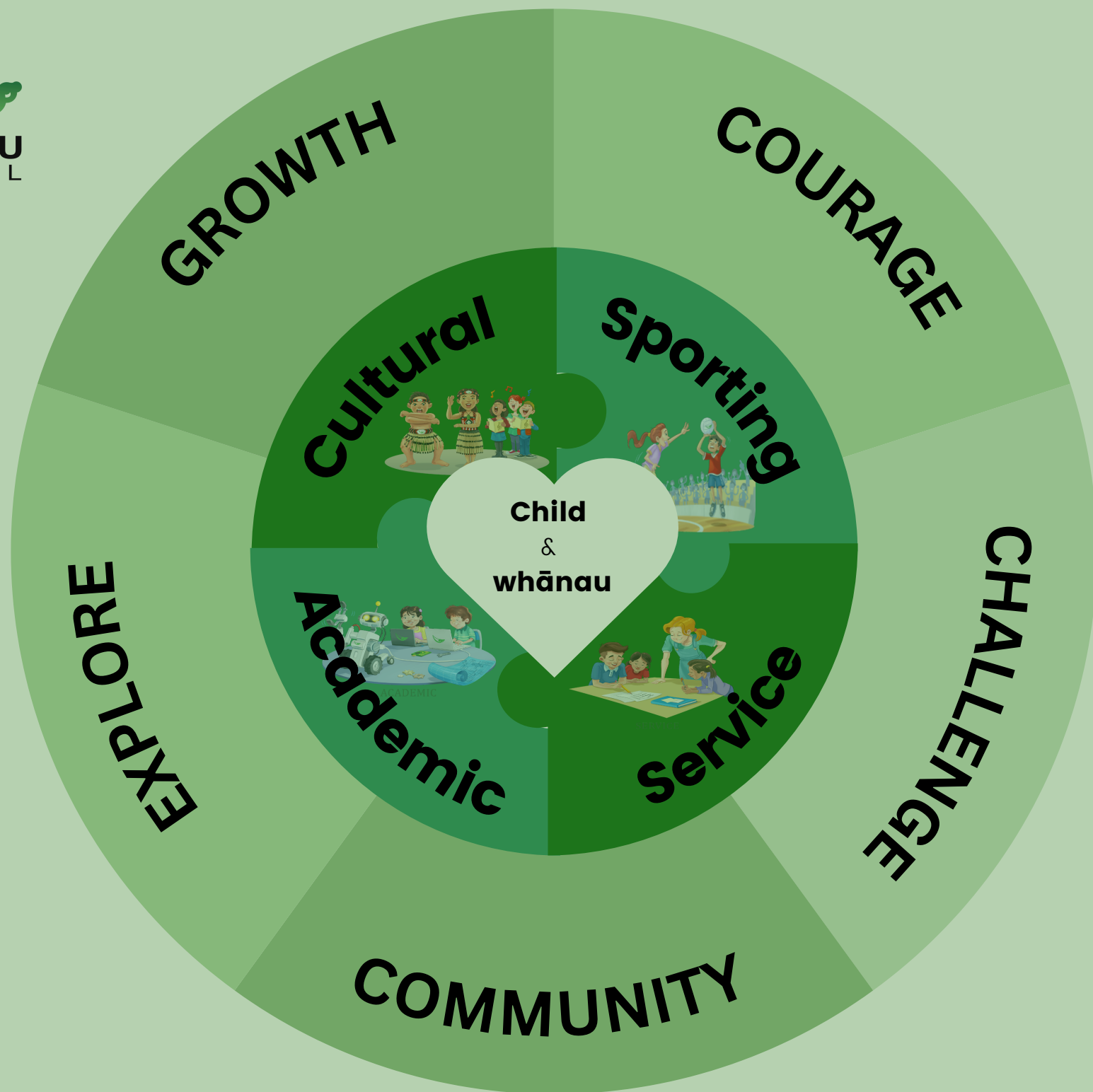
# Vision Statement

*We grow because we explore our limits, question our environment and live by our values.*

Every child and their whānau are at the heart of our decisions. We are dedicated to providing Academic, Cultural, Sporting, and Service opportunities, with the goal of enhancing the well-being of our community both now and in the years to come. Our values of Growth, Community, Challenge, Courage and Explore are embedded in every learning opportunity.

## How did we create this plan?

When creating our strategic goals, we relied on extensive data gathered through the Rongohia Te Hau survey, a comprehensive community engagement initiative which included whānau, students and staff. Through this process, we identified key themes that resonated strongly with our community, including the importance of maintaining robust positive relationships, providing a holistic approach to teaching, fostering a safe environment, and emphasising Literacy, Numeracy and Science teaching and learning. The survey illuminated the community's desire to develop these curriculum areas, reflecting their aspirations for a well-rounded education. Furthermore, the feedback highlighted a positive response to our journey in Te Ao Māori, prompting a commitment to a gradual expansion of initiatives. By prioritising these goals, we align our strategic vision with the community's values, ensuring a collaborative and responsive educational environment that meets the diverse needs and aspirations of all our stakeholders.



# Strategic Plan 2024-2025

Aims	Initiatives	What do we expect to see?	Actions
<p>Have high aspirations for every learner and support these by partnering with their whānau.</p>	<p>Increase teacher capabilities and lift student achievement in Literacy and Numeracy.</p> <p>Strengthen student hauora and mana by developing the skills and knowledge required to support learners and their whānau.</p>	<p>Learners showing accelerated progress and achieving their individualised goals.</p> <p>Teacher knowledge about how to effectively teach Literacy and Numeracy.</p> <p>Teachers and staff will further develop their skills in supporting learners overall wellbeing.</p>	<ul style="list-style-type: none"> <li>• Better Start Literacy PLD</li> <li>• Embed Ideal Learning programme</li> <li>• Liz Kane PLD</li> <li>• Writer's Toolbox PLD</li> <li>• Moderation of Literacy samples</li> <li>• Workshops for whānau - how to help at home</li> <li>• House of Science subscription and PLD</li> <li>• Embed Pause Breathe Smile across the school</li> <li>• Participate in the Taku Wairua programme</li> <li>• Unpack the Mental Health Guidelines</li> </ul>
<p>Give effect to Te Tiriti o Waitangi</p>	<p>Normalise and integrate te reo Māori me ona tikanga.</p> <p>Establish equitable partnerships to inform decision making in our learning community.</p>	<p>Use of Te Reo Māori integrated throughout the day by both staff and learners. Deliberate teaching of Te Reo according to progressions.</p> <p>Tikanga practices at school normalised.</p> <p>Regular collaboration and opportunities for decision making between whānau Māori, staff and community.</p> <p>Increased knowledge of local stories.</p>	<ul style="list-style-type: none"> <li>• Develop teaching and learning progressions in te reo Māori me ona tikanga</li> <li>• Actively participate in Te Ohu kaiārahi o te Kapua Iti</li> <li>• Develop knowledge and ways of teaching Ngā Pou (Local Stories)</li> <li>• Provide regular authentic opportunities for whānau Māori hui</li> <li>• Unpack the text Niho Taniwha (Melanie Riwai-Couch)</li> </ul>



# National Education Learning Priorities

*Our Strategic Aims are informed by consultation with our community and the National Education Learning Priorities*

	Learners at the Centre	Barrier Free Access	Quality Teaching & Leadership
Objectives	Learners with their whānau are at the centre of education	Great education opportunities and outcomes are within reach for every learner	Quality teaching and leadership make the difference for learners and their whānau
Priorities	<ul style="list-style-type: none"> <li>• Ensure places of learning are safe, inclusive and free from racism, discrimination and bullying</li> <li>• Have high aspirations for every learner/ākonga, and support these by partnering with their whānau and communities to design and deliver education that responds to their needs, and sustains their identities, languages and cultures</li> </ul>	<ul style="list-style-type: none"> <li>• Reduce barriers to education for all, including for Māori and Pacific learners/ākonga, disabled learners/ākonga and those with learning support needs</li> <li>• Ensure every learner/ ākonga gains sound foundation skills, including language*, literacy and numeracy</li> </ul>	<ul style="list-style-type: none"> <li>• Meaningfully incorporate te reo Māori and tikanga Māori into the everyday life of the place of learning</li> <li>• Develop staff to strengthen teaching, leadership and learner support capability across the education workforce</li> </ul>

# Strategic Plan Roadmap

2024				2025			
Term 1	Term 2	Term 3	Term 4	Term 1	Term 2	Term 3	Term 4
Better Start Literacy PLD Year 0-2	Embed Better Start Literacy Years 0-2			Better Start Literacy PLD Year 2/3	Embed Better Start Literacy Year 3/4		
	Embed Ideal Learning Structured Literacy Year 3/4				Better Start Literacy PLD Year 4-8 and Leadership		
	The Code PLD Year 5-8	The Code PLD Year 3/4	Embed Liz Kane PLD Year 3-8	Embed Liz Kane PLD			
Writer's Toolbox (WTB) PLD		Embed Writer's Toolbox PLD Year 3-8		WTB PLD for new staff	Embed Sentence Train Writer's Toolbox PLD Year 0-3		
				Purchase WTB Subscription	Regularly use Writer's Toolbox Subscription and use as an Assessment Tool Year 4-8		
			Moderation of Literacy Samples				
	Workshops for whānau - how to help at home			Better Start Literacy whānau workshops Year 0-3		Better Start Literacy whānau workshops Year 4-8	
				Pause Breathe Smile PLD for new staff	Embed Pause Breathe Smile across the school		
Embed tikanga practices school wide and participate in He Rautaki PLD				Subscribe to Te Puna Reo	Use Te Puna Reo daily across the school and continue PLD modules in staff hui		
Actively participate in Te Ohu Kaiārahi o te Kapua Iti & Develop knowledge and ways of teaching Ngā Pou (Local Stories)							
Provide regular opportunities for whānau Māori hui					Provide regular opportunities for whānau Māori hui		
	Unpack Niho Taniwha as a staff						
				Trial using Oxford Digital (Math Resource provided by MoE)			
				Participate in PLD for the Revised Mathematics Curriculum			
					Start using the Revised English curriculum Phase 1 & 2		
			Strengthen attendance by following the Stepped Attendance Response Framework				