

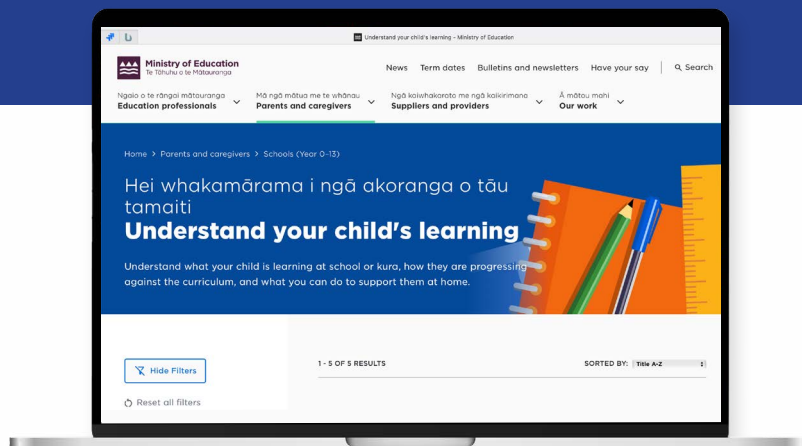
Understand your child's learning

Information and resources for parents, caregivers and whānau

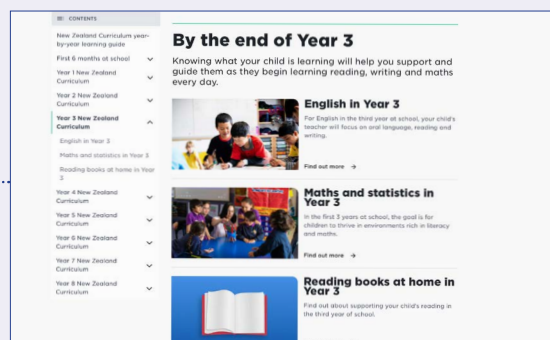
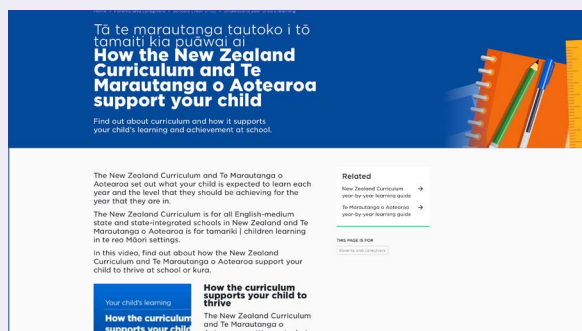
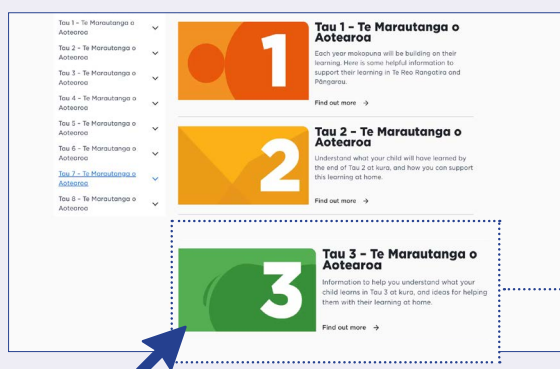
A new webspace on [education.govt.nz](https://www.education.govt.nz) houses practical videos, activities and resources for supporting learning that are easy to understand, empowering you to take an active role in your child's education.

An introductory video that walks you through the content is available [here](#).

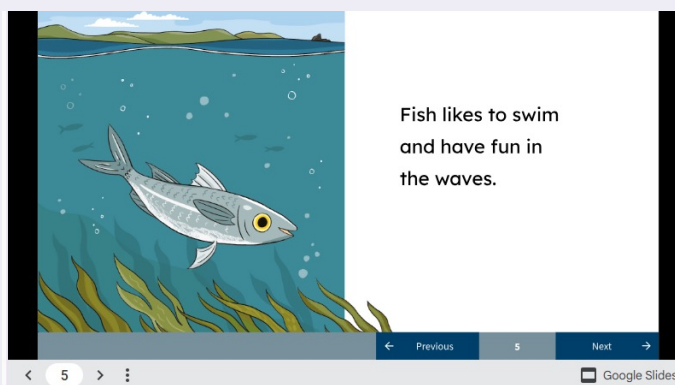
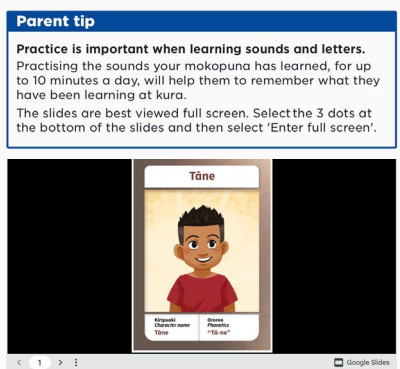
With the launch of the 'parent-friendly' versions of both our national curricula, you will know exactly what your child is learning, why it's important, and when they'll be learning it, so that you can actively support and complement your child's learning at home and have meaningful conversations with your child's teacher or kaiako.



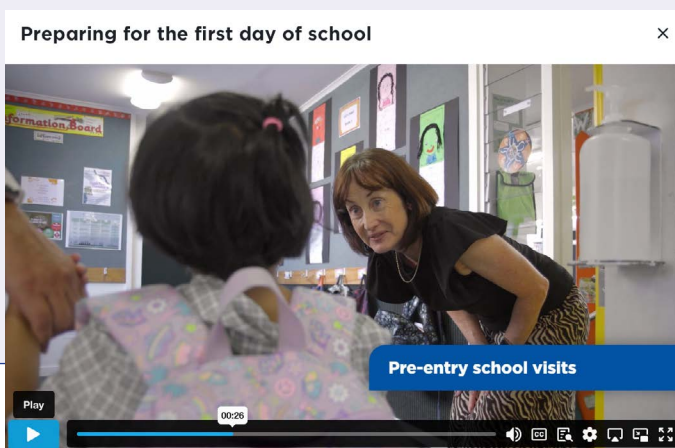
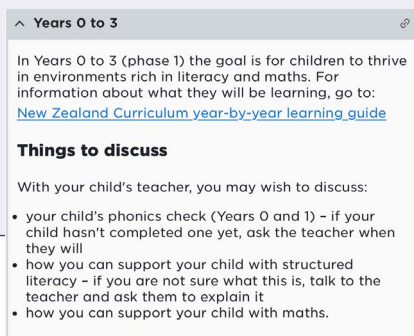
To navigate the website, you can choose which curriculum you want to learn more about and then go to your child's year level.



There are practice activities for each year level that you can do with your child, and 'tips and tricks' to support learning at home. Phonics cards come with parent guidance with audio files to model the correct sounds.



There is also a guide on how to prepare for the first day of school, and tips for parent-teacher interviews.



The webspace also houses important information about how children will be assessed in the early years of schooling through the new Phonics Checks and Hihira Weteoro. It describes how parents and whānau can access additional support that their child or tamaiti might need.



As the national curriculum continues to be updated and implemented in all schools and kura over the next few years, more resources and supports will become available for parents, caregivers and whānau. We encourage you to visit the new webspace and check out the current resources, guides and videos available. If you have any feedback or suggestions, please email us at tepoutahu.engagement@education.govt.nz