

# HAUTAPU SCHOOL



## ‘Explore your Limits’

We grow because we explore our limits, question our environment and live by our values.

# STRATEGIC AIMS 2023

# Strategic Aims

1



## **Learners at the Centre**

Have high aspirations for every learner/ākonga, and support these by partnering with their whānau and communities to design and deliver education that responds to their needs, and sustains their identities, languages and cultures.

2



## **Barrier Free Access**

Ensure every learner/ ākonga gains sound foundation skills, including language, literacy and numeracy

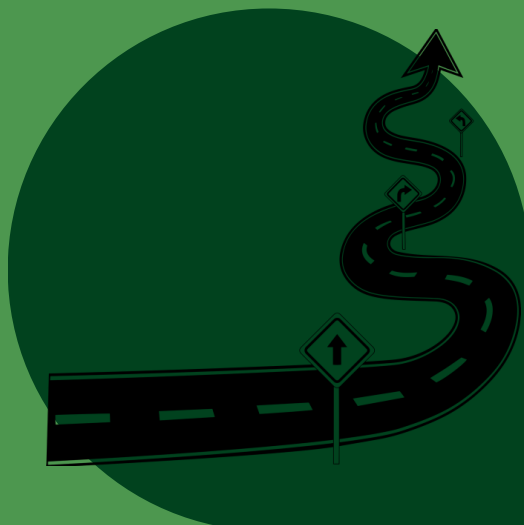
3a



## **Quality Teaching & Leadership**

Meaningfully incorporate te reo Māori and tikanga Māori into the everyday life of the place of learning

3b



## **Quality Teaching & Leadership**

Develop staff to strengthen teaching, leadership and learner support capability across the education workforce



# Our Actions

## 1. Learners at the Centre



- Plan effective mental health education programmes to enhance students' hauora in a holistic approach (mental, physical, social and spiritual wellbeing).
- Involve whānau and bring in-school and out-of-school learning together to support valued outcomes for tamariki (children) and rangatahi (young people).
- Continue developing a local curriculum that is built on our Vision, Values and community aspirations.
- Actively participate within our Community of Learning - Te Oko Horoi.

## 2. Barrier Free Access

- Measure progress and achievement against the targets set for our Literacy and Numeracy Priority Learners to actively address the disparity between our ethnic and gender groups.
- Measure progress and achievement of all students in Literacy and Numeracy
- Teachers will initiate contact with whānau of Priority Learners within the first term and share/set goals together.
- Interventions will be put in place specific to the learners' needs.



## 3a. Quality Teaching & Leadership

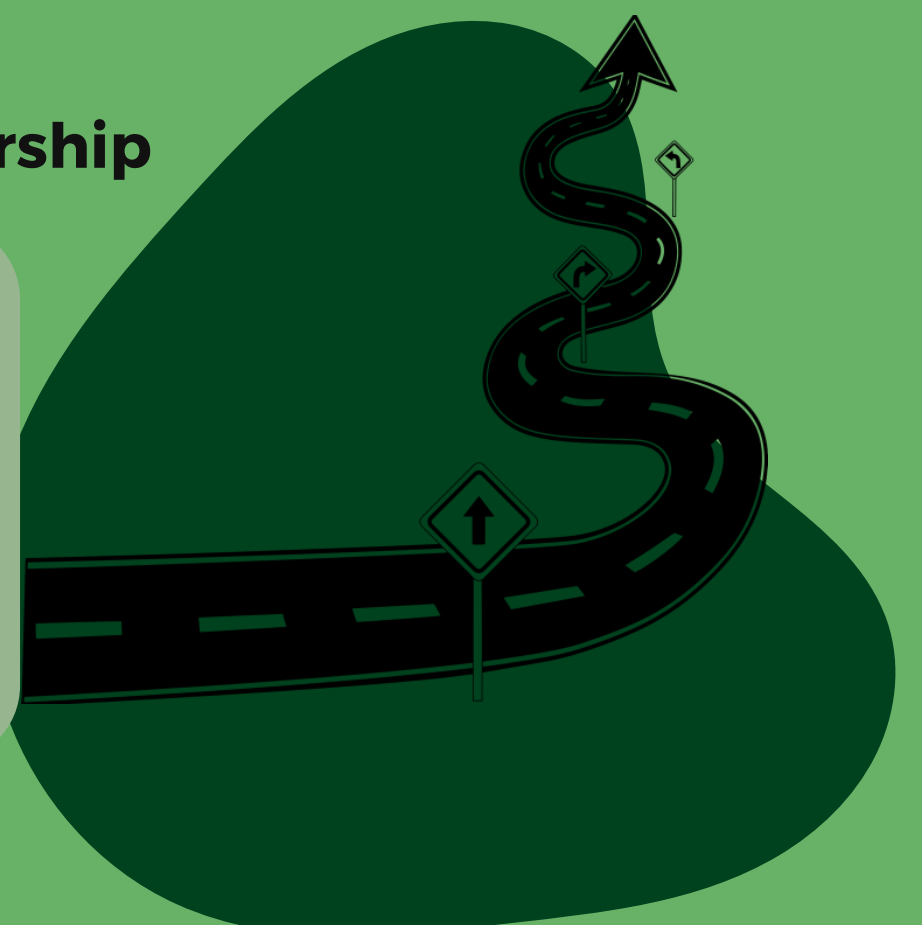


Develop ways in which we give effect to Te Tiriti o Waitangi by:

- Working to ensure our plans, policies and local curriculum reflect local tikanga Māori, mātauranga Māori and te ao Māori.
- Taking all reasonable steps to make instruction available in tikanga Māori and te reo Māori
- Achieving equitable outcomes for Māori students

## 3b. Quality Teaching & Leadership

- Continue to increase teacher knowledge and expertise in the Mathematics curriculum.
- Continue to build our understanding and delivery of Structured Literacy.
- Use the Writer's Toolbox programme to lift Writing Achievement data.



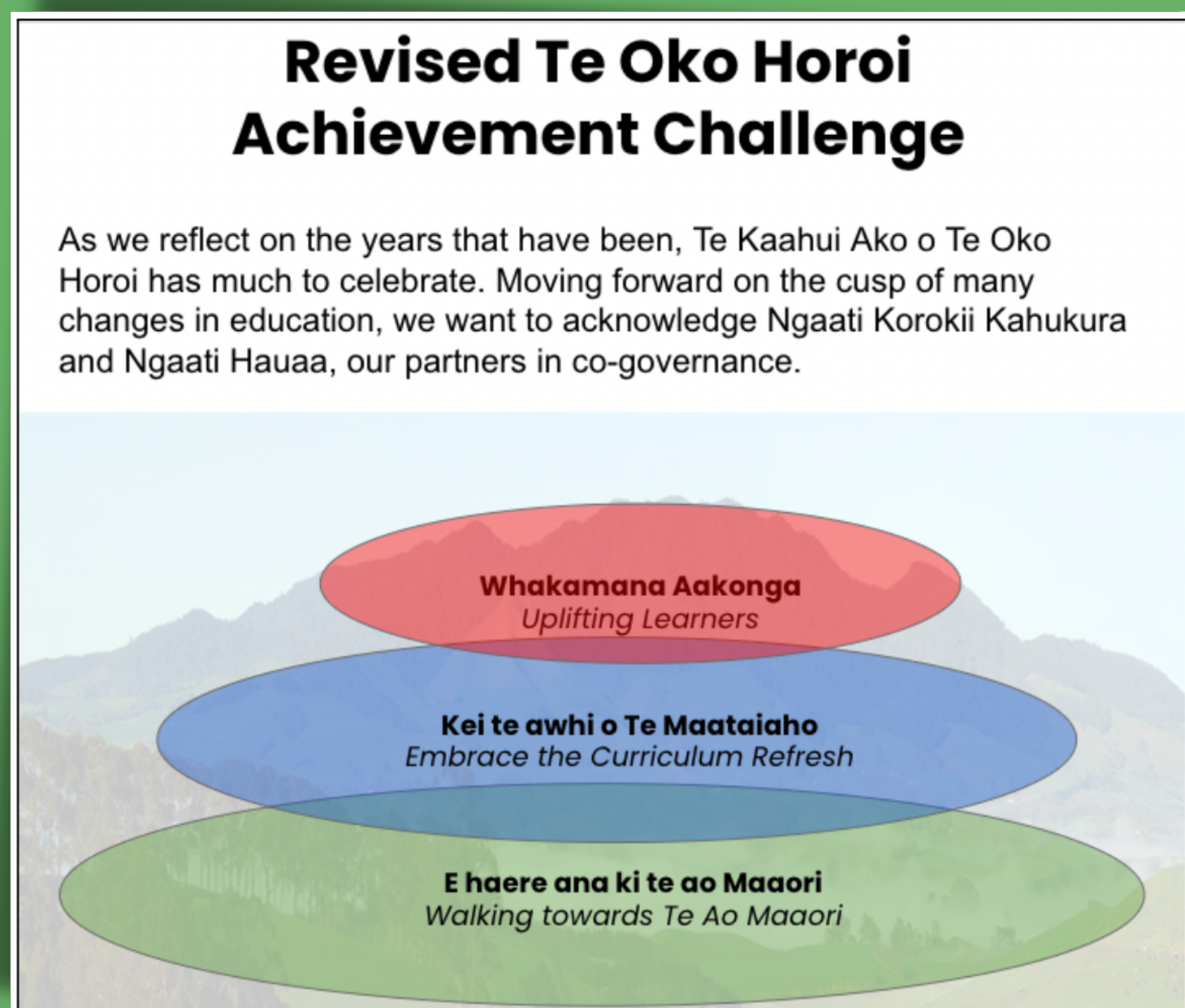


## **Cambridge Community of Learning (Kāhui Ako)**

Hautapu School is an active member of Te Oko Horoi which is the name of our Cambridge Community of Learning (Kāhui Ako).

Since Mid 2014 school leaders from across Cambridge have been meeting to identify the uniting factors between all our schools, investigating the achievement challenges we have in common and collaborating on a pathway forward that will increase achievement and reduce disparity for all our learners.

This is a unique opportunity to pioneer a shift in the way we support educators to extend practise in ways that are both individually and collectively purposeful while also being professionally rewarding.



To ensure inclusive and equitable pathways, we have identified Te Ao Māori and Honouring Te Tiriti o Waitangi as the foundation for strengthening our knowledge and practice in our settings.